

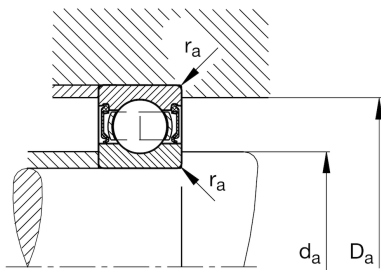
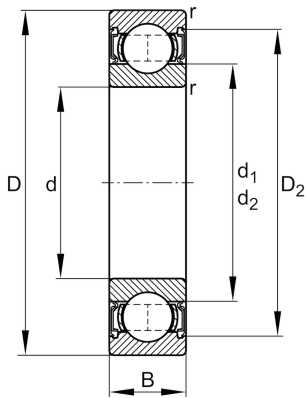
FAG

62309-2RSR

Deep groove ball bearing

Schaeffler ID:
0167221590000Deep groove ball bearing 623..-2RSR,
single row, seals, steel sheet metal cage

Technical information

**Dimensions**

r_{\min}	1.5 mm	Minimum chamfer dimension
D_2	85.6 mm	Caliber diameter outer ring
d_1	62 mm	Shoulder diameter inner ring
	1.19 kg	Weight

Main Dimensions & Performance Data

d	45 mm	Bore diameter
D	100 mm	Outside diameter
B	36 mm	Width
C_r	56,000 N	Basic dynamic load rating, radial
C_{0r}	31,500 N	Basic static load rating, radial
C_{ur}	2,240 N	Fatigue load limit, radial
n_G	4,300 1/min	Limiting speed

Mounting dimensions

$d_{a\min}$	54 mm	Minimum diameter shaft shoulder
$D_{a\max}$	91 mm	Maximum diameter of housing shoulder
$r_{a\max}$	1.5 mm	Maximum fillet radius

Calculation factors

f_0	12.9	Calculation factor
-------	------	--------------------

Temperature range

T_{\min}	-20 °C	Operating temperature min.
T_{\max}	110 °C	Operating temperature max.